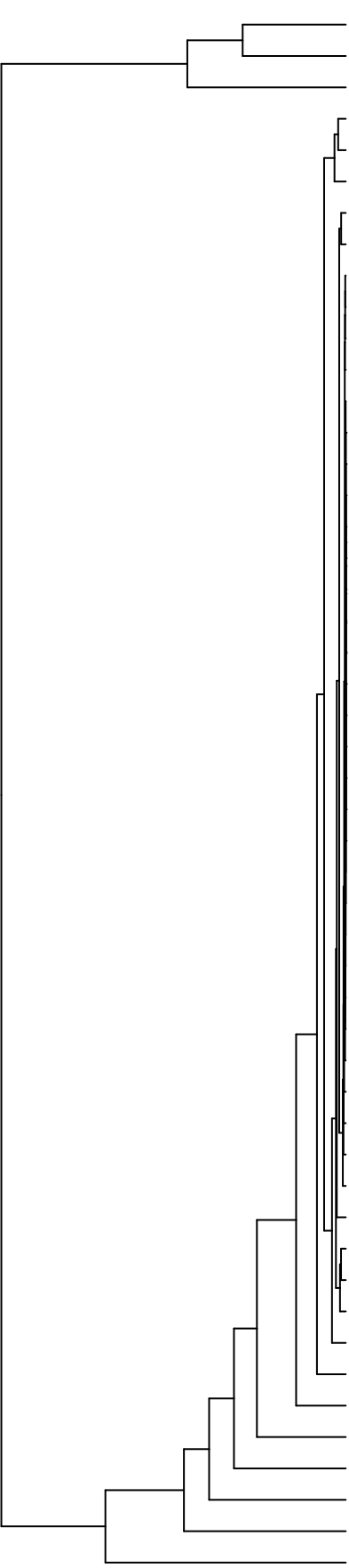


Group006
 J Final -PMA
 F Final -PMA



- Veillonella
- Haemophilus
- Streptococcus
- Eikenella
- Aggregatibacter
- Granulicatella
- Gemella
- Porphyromonas
- Lachnoanaerobaculum
- Oribacterium
- Solobacterium
- Actinomyces
- Lautropia
- Capnocytophaga
- Cutibacterium
- Phyllobacterium
- Lachnospiraceae_[G-2]
- Acinetobacter
- Serratia
- Novosphingobium
- Leifsonia
- Agrobacterium
- Sphingobium
- Riemerella
- Microbacterium
- Siccationidurans
- Saccharibacteria_(TM7)_[G-5]
- Acidovorax
- Absconditabacteria_(SR1)_[G-1]
- Saccharibacteria_(TM7)_[G-6]
- Lancefieldella
- Saccharibacteria_(TM7)_[G-1]
- Alloprevotella
- Delftia
- Pseudomonas
- Stomatobaculum
- Catonella
- Staphylococcus
- Schaalia
- Campylobacter
- Leptotrichia
- Prevotella
- Rothia
- Salmonella
- Enterobacter
- Raoultella
- Fusobacterium
- Citrobacter
- Neisseria
- Klebsiella

- F28914.S467
- F28914.S612
- F28914.S610
- F28914.S465
- F28914.S468
- F28914.S470
- F28914.S440
- F28914.S437
- F28914.S593
- F28914.S438
- F28914.S596
- F28914.S595
- F28914.S305
- F28914.S311
- F28914.S312
- F28914.S310
- F28914.S116
- F28914.S114
- F28914.S275
- F28914.S273
- F28914.S119
- F28914.S276
- F28914.S148
- F28914.S145
- F28914.S149
- F28914.S117
- F28914.S279
- F28914.S280

Samples

Genus